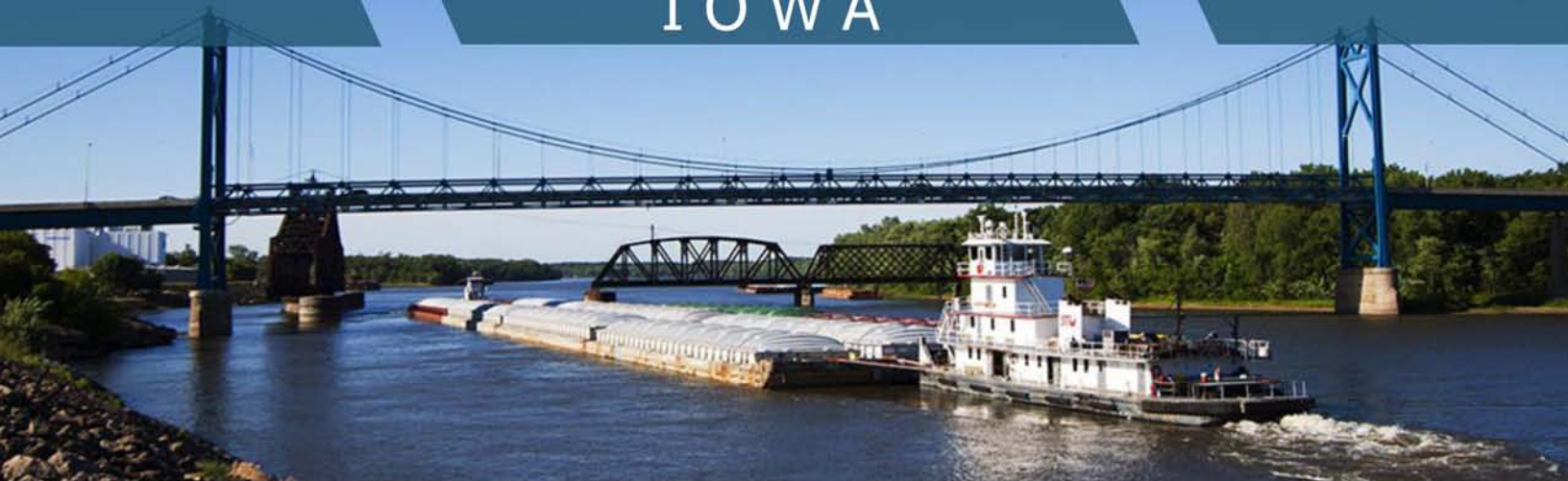




# LABORSHED ANALYSIS



## CLINTON COUNTY IOWA

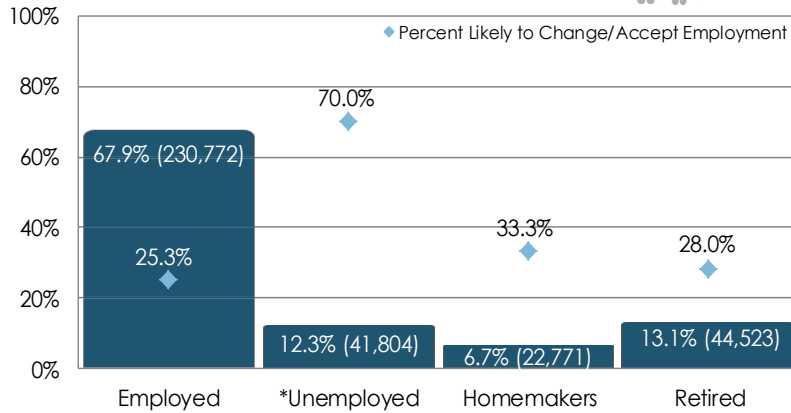


A STUDY OF WORKFORCE CHARACTERISTICS  
RELEASED MARCH 2016

# CLINTON COUNTY LABORSHED ANALYSIS

A Laborshed is the area or region from which an employment center draws its commuting workers. To determine the approximate boundaries of a Laborshed area, local employers supply the residential ZIP codes of each of their employees. This Laborshed analysis addresses the workforce characteristics of the Clinton County Laborshed area.

## EMPLOYMENT STATUS (ESTIMATED TOTAL)\*



\*Employment status is self-identified by the survey respondent. The unemployment percentage above does not reflect the unemployment rate published by the U.S. Bureau of Labor Statistics, which applies a stricter definition.

**Estimated Population 18-64: 339,870 (entire Laborshed area)**

**Estimated Number of Individuals Very Likely or Somewhat Likely to Change or Accept Employment in Clinton (34,227):**

- 29,539 Employed
- 1,617 Unemployed
- 1,279 Homemakers
- 1,792 Retired

## EMPLOYED - LIKELY TO CHANGE EMPLOYMENT

- 18.8% are actively seeking new employment
- 8.8% are working multiple jobs
- Currently working an average of 43 hrs/week
- Average age is 45 years old
- 40.0% currently working within the production, construction & material handling occupational category followed by 28.3% within the professional, paraprofessional & technical occupational category
- Most frequently identified job search resources:

www.indeed.com  
www.monster.com

Internet,  
75.4%

Newspapers,  
27.7%

Quad City Times  
Clinton Herald

IowaWORKS  
Centers,  
23.1%

Networking,  
10.8%



## UNDEREMPLOYMENT



	Underemployment	
	% Underemployed	Estimated Underemployed
Inadequate Hours	1.5%	443
Mismatch of Skills	1.2%	354
Low Income	0.0%	0
†Total Underemployment	2.5%	738

† Individuals may be underemployed for more than one reason, but are counted only once for total estimated underemployment.

The underemployed are individuals who are working fewer than 35 hours per week but desire more hours; are working in positions that do not meet their skill or education level, or have worked for higher wages at previous employment; or are working at wages equal to or less than the national poverty level and work 35 or more hours per week.

## EMPLOYMENT LEVELS AND STATUS BY INDUSTRY



Industry	Industry % of Employed	Estimated # of Employed	% Employed within the Industry	% Likely to Change Employment	% Unemployed* within the Industry
Manufacturing	21.4%	49,385	62.4%	24.1%	16.1%
Healthcare & Social Services	15.5%	35,770	82.4%	33.3%	5.9%
Wholesale & Retail Trade	14.1%	32,539	76.0%	28.9%	10.0%
Education	11.1%	25,616	66.7%	20.0%	0.0%
Transportation, Communication & Utilities	9.2%	21,231	75.8%	33.3%	3.0%
Professional Services	6.3%	14,539	70.8%	17.6%	16.7%
Public Administration & Government	5.9%	13,616	69.6%	20.0%	8.7%
Personal Services	5.5%	12,692	71.4%	33.3%	9.5%
Finance, Insurance & Real Estate	5.2%	12,000	73.7%	0.0%	0.0%
Construction	3.3%	7,615	56.3%	22.2%	37.5%
Agriculture, Forestry & Mining	2.5%	5,769	87.5%	28.6%	12.5%

Survey respondents from the Clinton County Laborshed area were asked to identify the industry in which they are currently working. The largest concentration of workers are employed in the manufacturing industry.

## COMMUTING STATISTICS



The map at the right represents the concentration of those who are likely to commute into Clinton from their home ZIP for an employment opportunity.

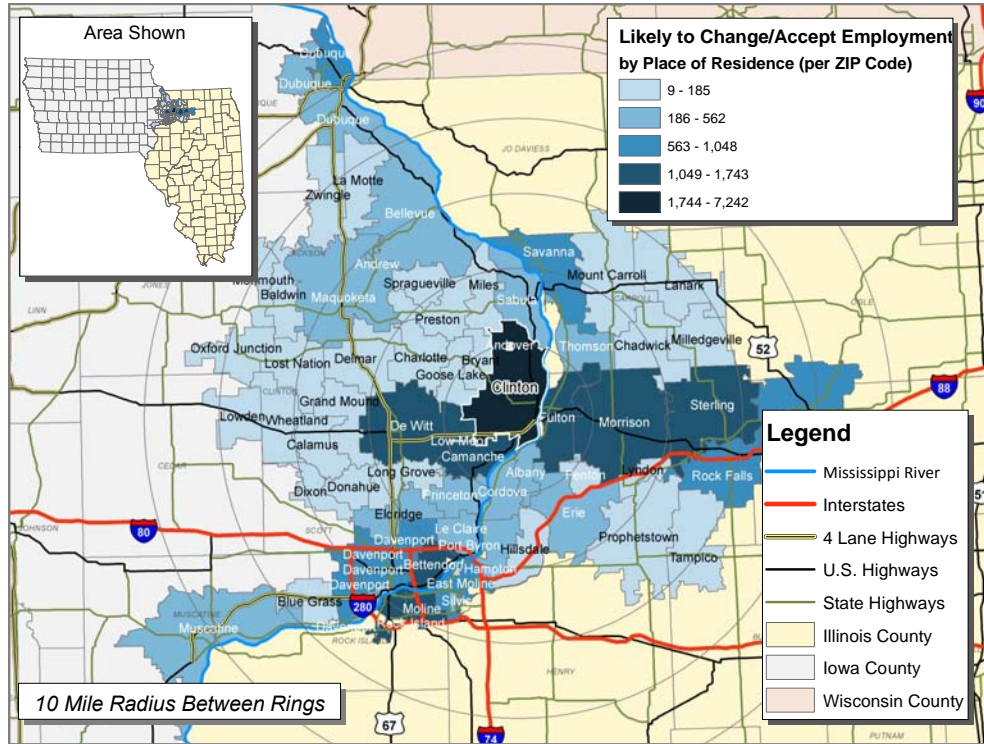
Those who are likely to change/accept employment in the Clinton County Laborshed area are willing to commute an average of 27 miles one-way for employment opportunities.

The out commute for Clinton is estimated at 23.3 percent—approximately 2,790 people living in Clinton work in other communities.

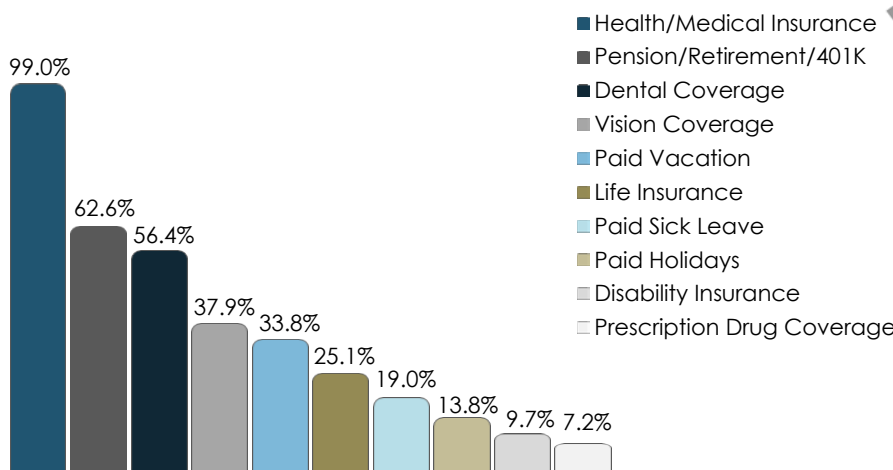
Most of those who are out commuting are working in Bettendorf (IA), Cordova (IL), Fulton (IL) or De Witt (IA).

Over one-third (35.0%) of out commuters are likely to change employment (approximately 977 people).

## CONCENTRATION OF THOSE LIKELY TO CHANGE/ACCEPT EMPLOYMENT IN CLINTON



## TOP CURRENT BENEFITS OF THE FULL-TIME EMPLOYED



The survey provides the respondents an opportunity to identify employment benefits they currently are offered. The chart at left provides the percentage of responses from those that are currently employed full-time.

The majority (81.4%) of these respondents state they are currently sharing the cost of health/medical insurance premiums with their employer. However, 11.7 percent indicate their employer pays the entire cost of insurance premiums.

## EDUCATION LEVELS AND MEDIAN WAGES BY INDUSTRY



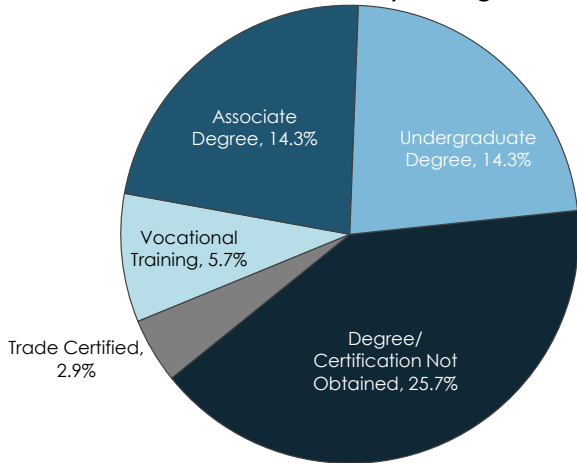
	Education			Median Wages	
	Some Level Beyond High School	Associate Degree	Undergraduate Degree or Higher	Annual Salary	Hourly Wage
Agriculture, Forestry & Mining	71.4%	**	**	**	**
Construction	68.7%	6.3%	18.8%	**	\$24.49
Education	88.9%	17.8%	62.2%	\$60,000	\$13.95
Entertainment & Recreation	**	**	**	**	**
Finance, Insurance & Real Estate	84.2%	5.3%	57.9%	\$48,000	**
Healthcare & Social Services	88.0%	32.0%	34.0%	\$83,000	\$18.38
Manufacturing	60.4%	7.7%	20.9%	\$74,500	\$20.00
Personal Services	71.4%	4.8%	14.3%	**	\$22.50
Professional Services	66.7%	20.8%	16.6%	\$65,500	\$10.63
Public Administration & Government	82.6%	17.4%	17.4%	\$63,400	\$21.00
Transportation, Communication & Utilities	66.7%	16.7%	10.0%	\$69,000	\$19.00
Wholesale & Retail Trade	70.0%	20.0%	12.0%	\$50,000	\$12.70

This table includes all respondents without consideration of employment status or willingness to change/enter employment.

\*\*Insufficient survey data/refused

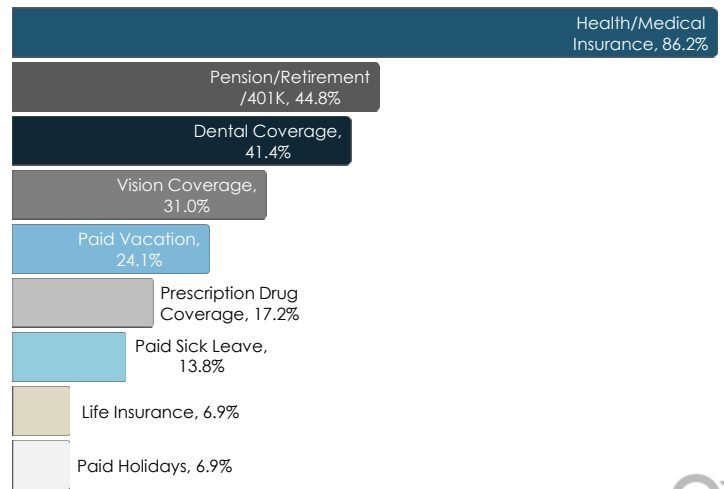
## UNEMPLOYED - LIKELY TO ACCEPT EMPLOYMENT

- 56.3% are actively seeking employment
- An estimated 1,617 unemployed individuals are likely to accept employment in Clinton.
- Average age is 48 years old
- 68.6% are male; 31.4% are female
- **Education:**
  - 62.9% are educated beyond high school

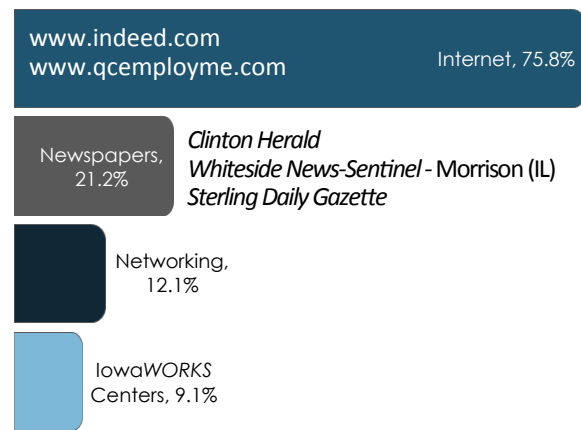


- **Wages:**
  - \$16.24/hr - to attract 66% of applicants
  - \$19.00/hr - to attract 75% of applicants
  - \$15.00/hr - lowest median wage willing to accept
- Willing to commute an average of 27 miles one way for the right opportunity
- 58.8% expressed interest in temporary and 55.9% in seasonal employment opportunities
- 64.7% expressed interest in working varied shifts

## DESIRED BENEFITS



## TOP UNEMPLOYED JOB SEARCH RESOURCES



## SPONSORED IN PARTNERSHIP WITH:



The Clinton County Laborshed is sponsored in part by the Iowa Economic Development Authority.

## FOR MORE INFORMATION REGARDING THE CLINTON COUNTY LABORSHED ANALYSIS, CONTACT:

Clinton Regional Development Corporation  
 721 South 2nd Street  
 Clinton, Iowa 52732  
 Phone: 563-242-4536  
 Email: [mail@clintondevelopment.com](mailto:mail@clintondevelopment.com)  
[www.clintondevelopment.com](http://www.clintondevelopment.com)

DeWitt Chamber & Development Company  
 1010 6th Avenue  
 DeWitt, Iowa 52742  
 Phone: 563-659-8500  
 Email: [admin@dewittiowa.org](mailto:admin@dewittiowa.org)  
[www.DewittIowa.org](http://www.DewittIowa.org)